

# MUNICIPALITY OF TWEED

## COMPREHENSIVE LAND USE ZONING BY-LAW 2012----

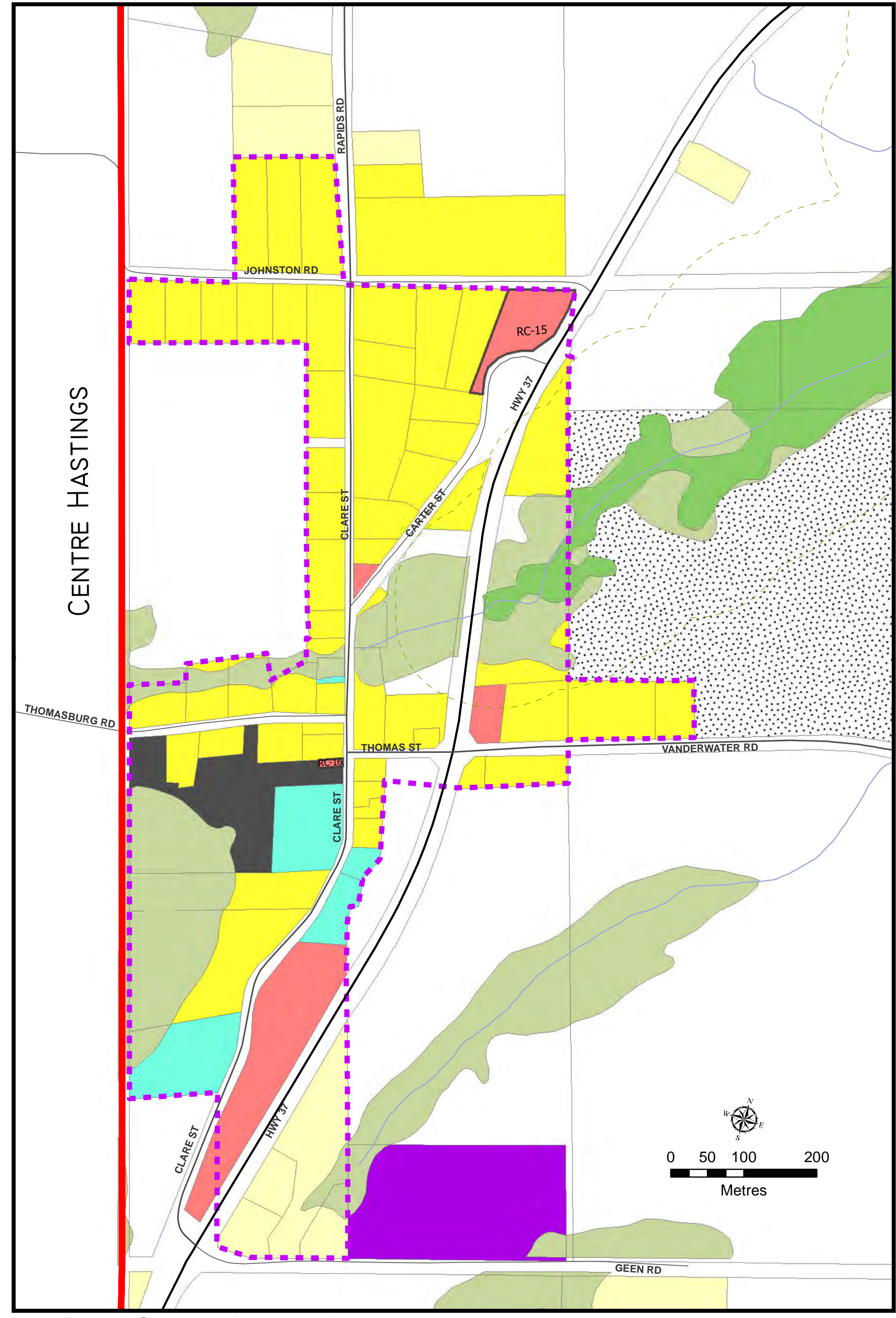
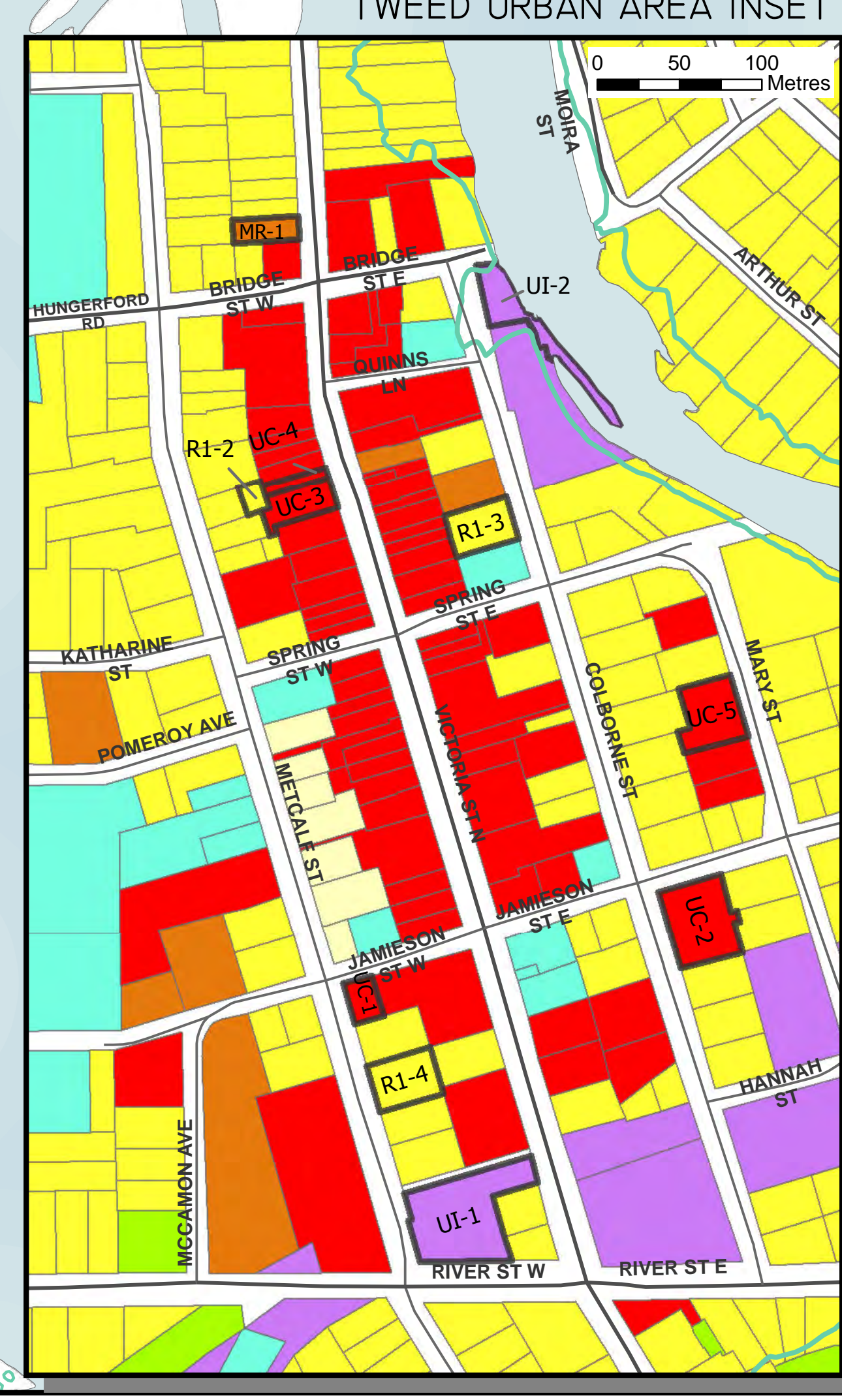
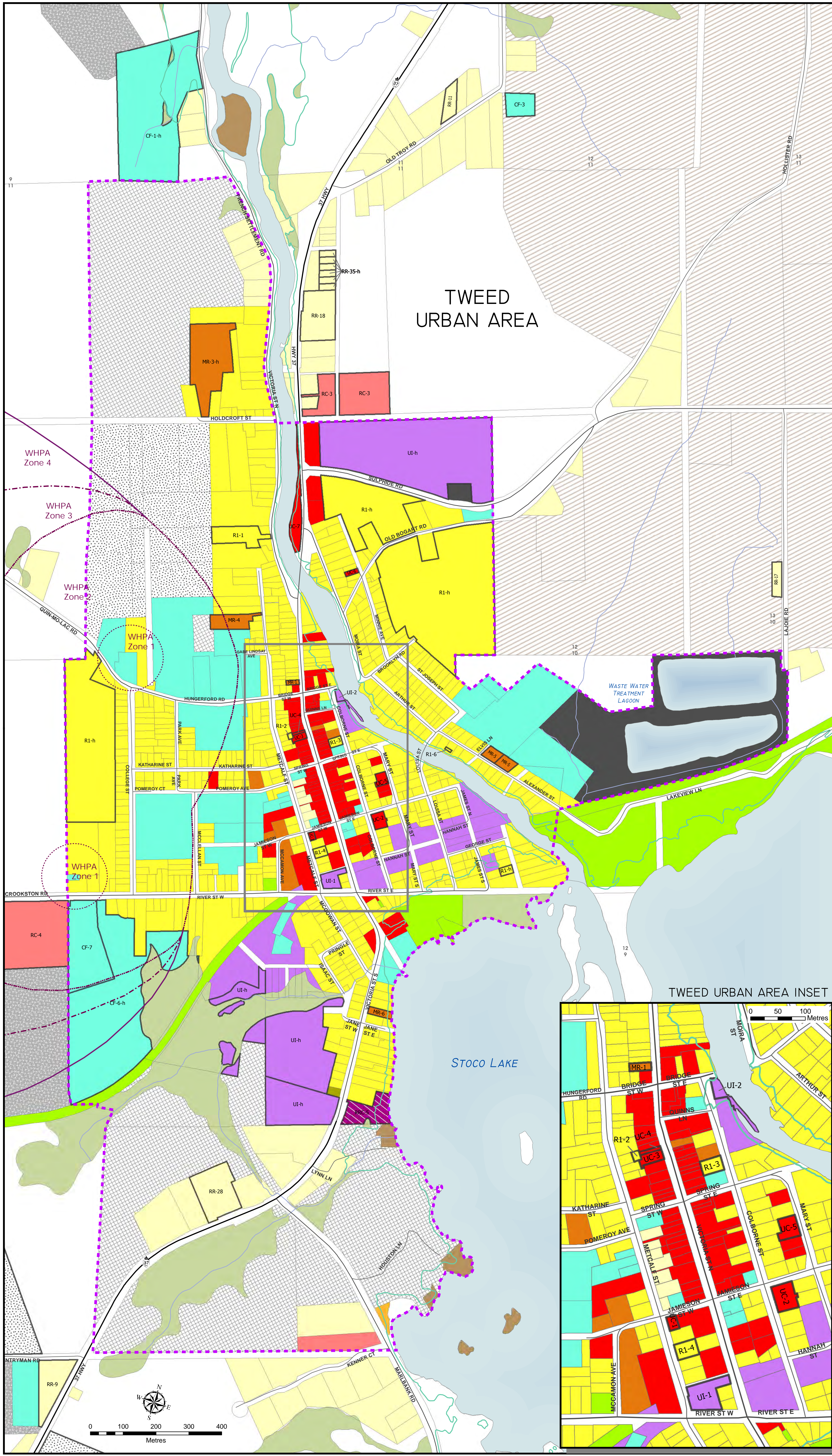
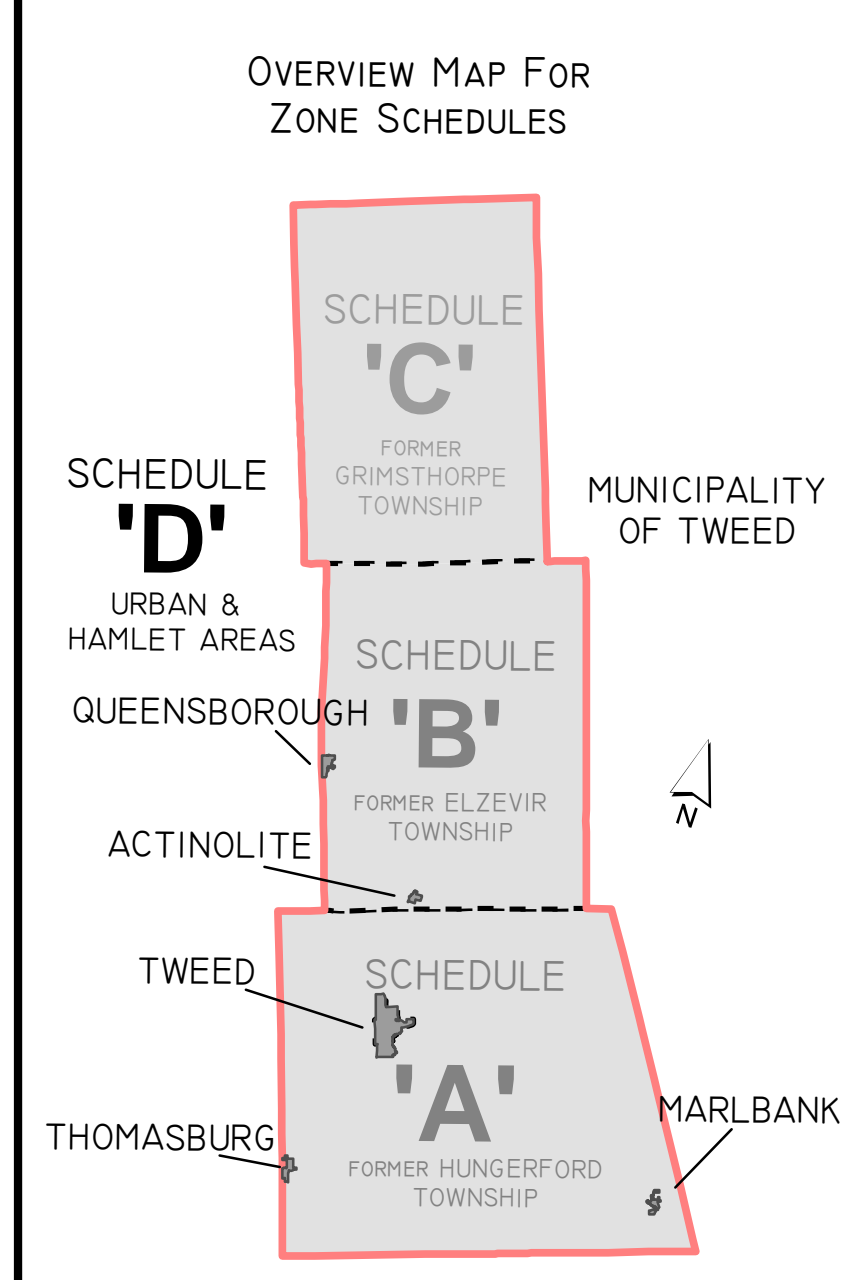
### SCHEDULE 'D' URBAN & HAMLET AREAS

THIS IS SCHEDULE 'D' TO BY-LAW 2012----  
PASSED THIS \_\_\_\_ DAY OF \_\_\_\_\_, 2012

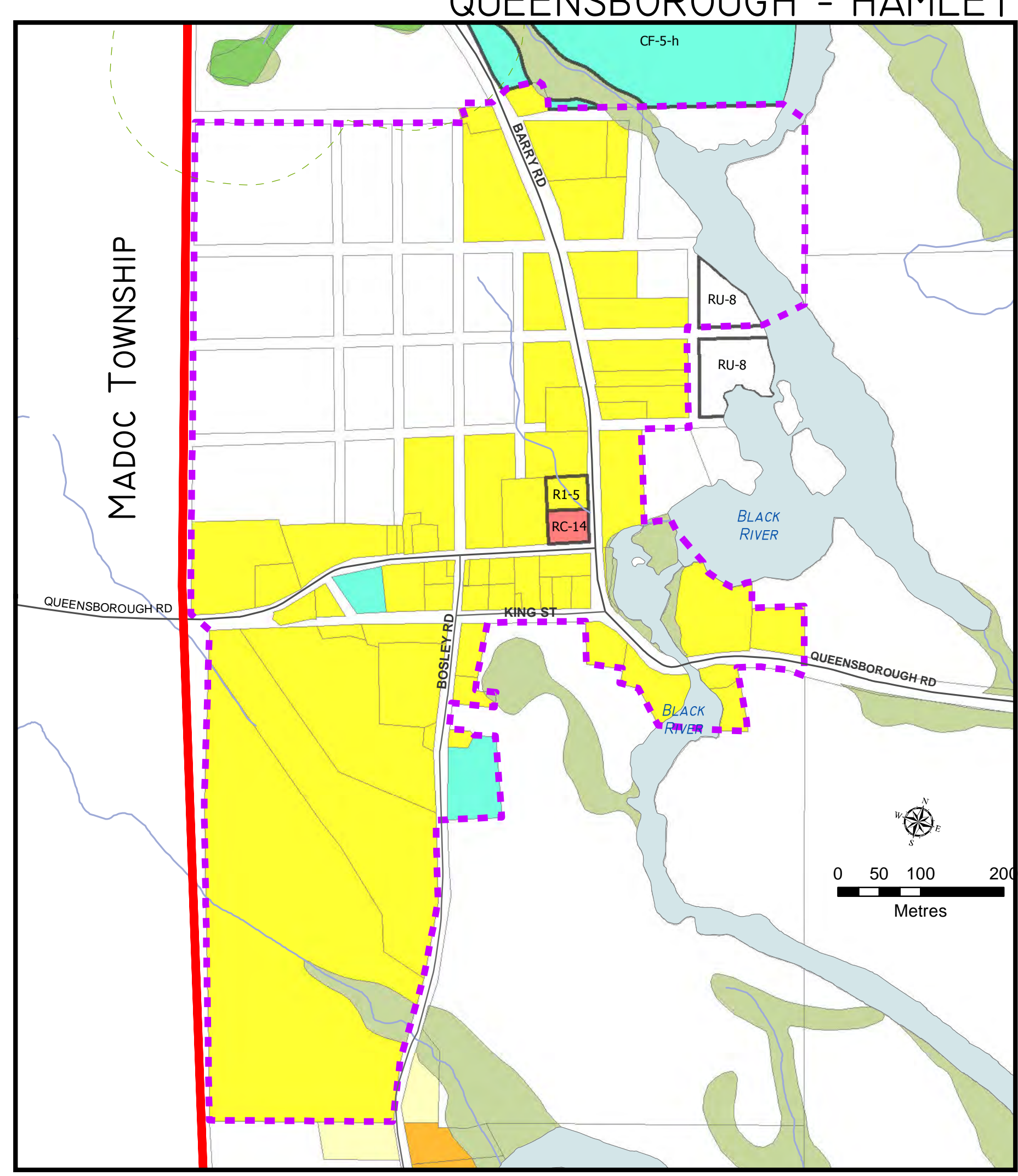
JO-ANNE ALBERT REVE  
PATRICIA BERGERON CAO/CLERK

COMPILED AND PRODUCED BY THE COUNTY OF HASTINGS PLANNING & DEVELOPMENT DEPARTMENT, WITH DATA SUPPLIED BY THE ONTARIO GEOSPATIAL DATA EXCHANGE (UNDER LICENSE BY MEMBERS), QUINTE CONSERVATION, GREEN GALLOWAY, JP2G AND ANILEY GROUP. THIS PRODUCT IS FOR INFORMATIONAL PURPOSES AND MAY NOT HAVE BEEN PREPARED FOR, OR BE SUITABLE FOR, LEGAL, ENGINEERING OR SURVEYING PURPOSES. THE COUNTY OF HASTINGS DISCLAIMS ALL RESPONSIBILITY FOR ERRORS, OMISSIONS OR INACCURACIES IN THIS PUBLICATION. COPYRIGHT ©2012 QUEEN'S PRINTER.

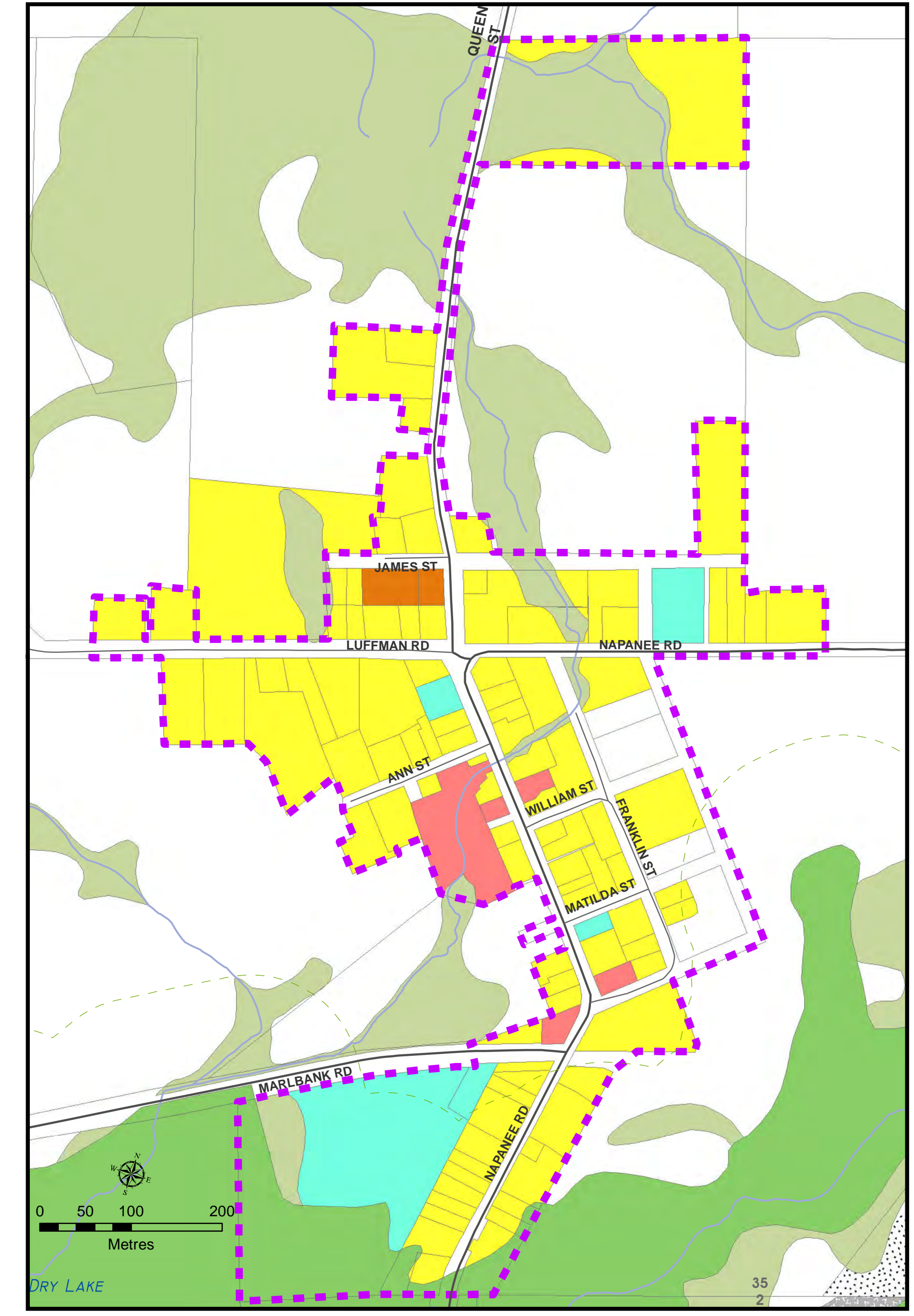
- GEOGRAPHIC FEATURES**
- HISTORIC URBAN/HAMLET BOUNDARY
  - COUNTY BOUNDARY
  - MUNICIPAL BOUNDARY
  - WATERBODY
  - CREEK OR STREAM
  - FLOODPLAIN
  - WHPA ZONE 1
  - WHPA ZONE 2
  - WHPA ZONE 3
  - WHPA ZONE 4
- LAND USE ZONES**
- RU - RURAL
  - RR - RURAL RESIDENTIAL
  - R1 - RESIDENTIAL DENSITY 1
  - R2 - RESIDENTIAL DENSITY 2
  - MR - MULTIPLE RESIDENTIAL
  - LSR - LIMITED SERVICE RESIDENTIAL
  - WR - WATERFRONT RESIDENTIAL
  - RRC - REC./RESORT COMMERCIAL
  - OS - OPEN SPACE
  - EP - ENVIRONMENTAL PROTECTION
  - ES-EW - ENVIRONMENTALLY SIGNIFICANT - EVALUATED WETLAND
  - UR - URBAN RESERVE
  - UC - URBAN COMMERCIAL
  - RC - RURAL COMMERCIAL
  - UI - URBAN INDUSTRIAL
  - RI - RURAL INDUSTRIAL
  - CF - COMMUNITY FACILITY
  - MX - EXTRACTIVE
  - MXR - EXTRACTIVE RESERVE
  - WD - WASTE DISPOSAL
  - PA - PRIME AGRICULTURE
- MAP FEATURES**
- LOT & CONCESSION NUMBER
  - RU-1 EXCEPTION/SPECIAL ZONE LABEL
  - ZONE BOUNDARY
  - EXCEPTION/SPECIAL ZONE
  - 120M ES-EW SETBACK



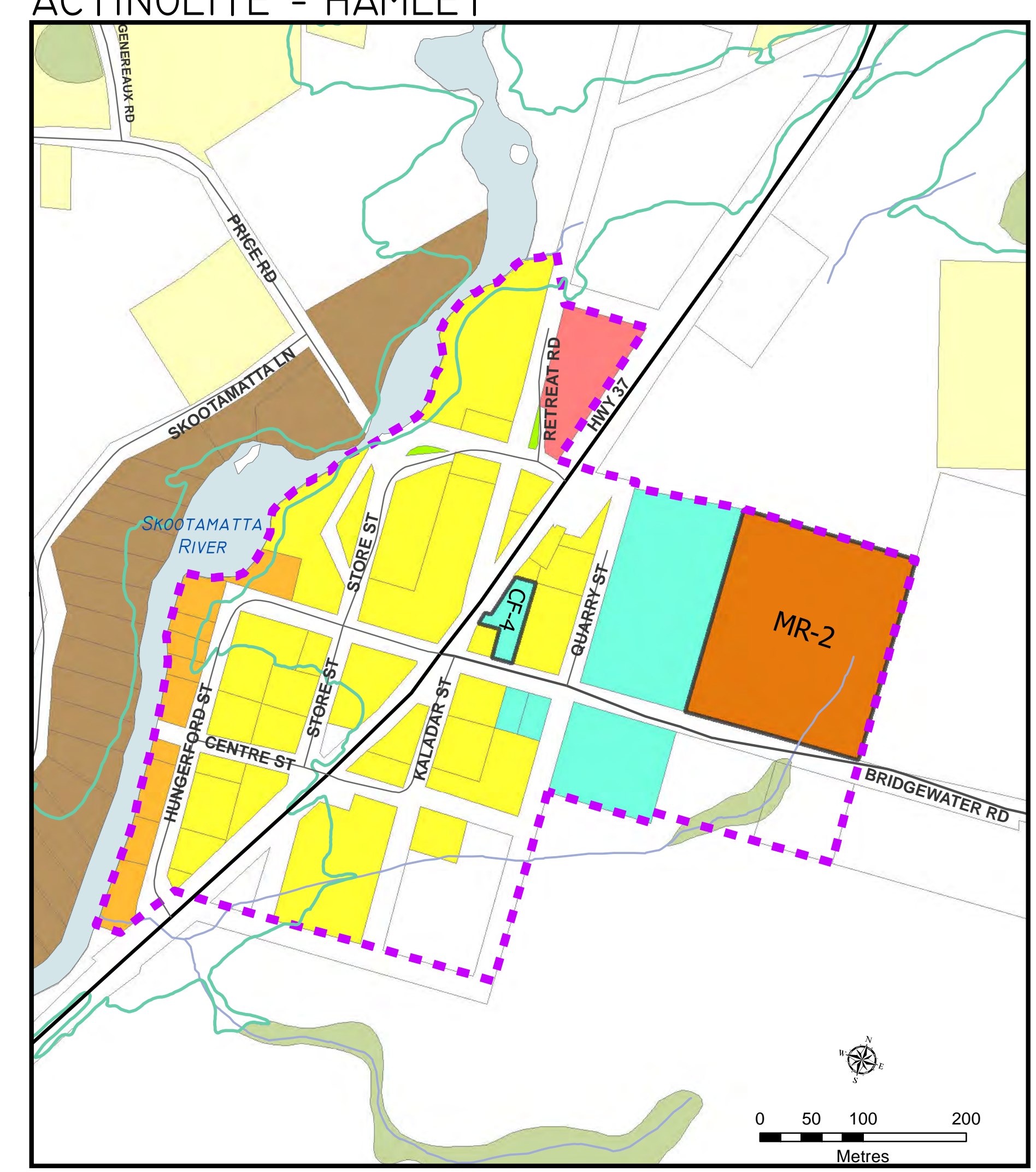
THOMASBURG - HAMLET



QUEENSBOROUGH - HAMLET



MARLBANK - HAMLET



ACTINOLITE - HAMLET